

FAST FACTS, September 2015

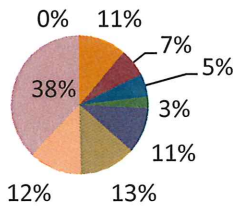
Gifted Education...Making a Difference!

GATE By The Numbers

Current Number of Students in GATE K-12	350
Current Percentage of Students Districtwide in GATE	10.4% (Total RE-1 Enrollment as of 10/1/14 is 3351)
Current Percentage of GT Students on ALP (Tier III)	92% (322)
Current Percentage of GT Students in Talent Pool (Tier II)	8% (28)

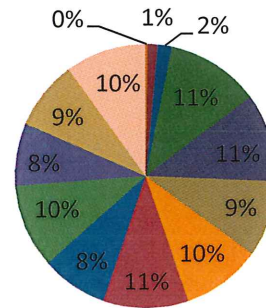
2015-2016 Breakdown by School (%)

- Canon Exploratory School
- Lincoln Elementary
- Harrison K-5
- Canon City Middle School
- Canon Online Academy
- Washington Elementary
- McKinley Elementary
- Harrison 6-8
- Canon City High School

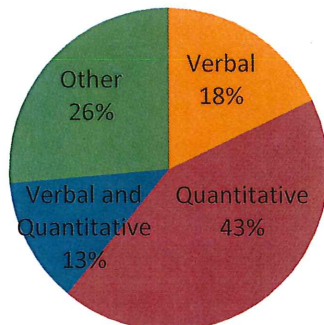


2015-2016 Breakdown by Grade Level (%)

- K
- 1st
- 2nd
- 3rd
- 4th
- 5th
- 6th
- 7th
- 8th
- 9th
- 10th
- 11th
- 12th



2015-2016 GATE Population Separated by Area of Giftedness (%)



Looking Back >>> 2014-2015 Accomplishments

- Extremely successful, second annual Fund Raiser Breakfast (organized by PAGE), which provided for \$1,600 in materials purchase, learning opportunities, enrichment Field Trips
- Added a Middle School instructional field trip to Cheyenne Mountain State Park
- Added a LEGO Mindstorm Robotics workshop for grades 7-10 in September (Challenger Learning Center)
- Attended a Middle School instructional field trip to TedX@Mile High
- Outstanding review from the Colorado Gifted Education Review team who completed our audit in November of last year
- Gifted Resource Teachers continue to collaborate with general education staff on a regular basis
- Gifted Parenting tips shared on an ongoing basis through GATE Quarterly and school newsletters
- GATE staff presented workshops to schools throughout the district on gifted education topics
- 100% of Tier III students have updated ALP
- Successful SENG (Social Emotional Needs of the Gifted) Parent Book Study
- Successful implementation of the Gifted UIP Addendum to the District UIP (Exemplary rating from CDE)

Looking Ahead >>> 2015-2016

- Implementation of the new rules for GT Identification
- Welcoming our newly higher middle school GT teacher, Mr. Steven Carter, to the department and helping to provide for a successful transition
- Celebrate GATE! is on 10.28.15, featured international experts in CREATIVITY, Dr. Rick Shade and Patti Garrett-Shade

2012-2016 Program Plan Targets

#1: Increase parent awareness in gifted education events and procedures, measured by a 10% improved attendance rate at GATE events by 2016, evidenced by signed parent attendance sheets.

#2: Increase number of identified FARM students by 10% by 2016.

#3: Tier III Math gifted students will improve state Math test "advanced" scores from 50% to 70%.

Tier III Language Arts gifted students will improve state Reading test "advanced" scores from 26% to 45%.

#4: Tier III Math gifted students will improve TCAP Math median growth percentile from 43 to 52.

Tier III Language Arts & Math gifted students will improve CSAP Math median growth percentile from 45 to 54.

#5: By 2016, all schools will have UIP goals addressing gifted student achievement and growth.

#6: District classroom teachers will increase effective use of differentiated instructional methods by 20%, as evidenced by teacher year-end surveys, and as evidenced by gifted student achievement on state testing.

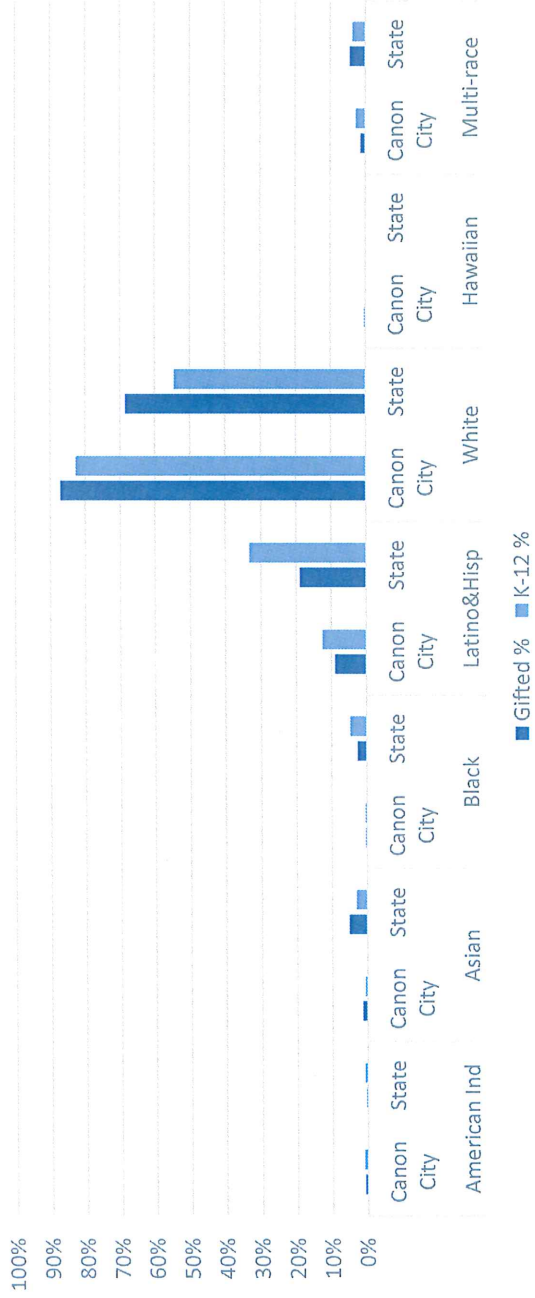
#7: Maintain current district supplement to support gifted education program goals and gifted student academic, social, and emotional needs.

#8: Maintain and sustain current record keeping practices.

See ADDENDUM from CDE Demographics

Canon City Schools - Addendum

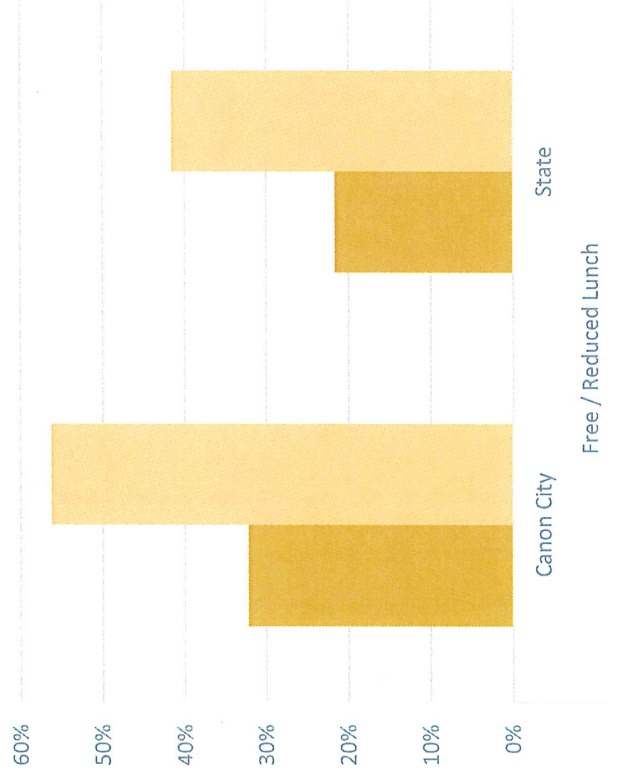
Race/Ethnicity



Twice Exceptional Rate within Gifted



Socio-economic



English Language Learners

